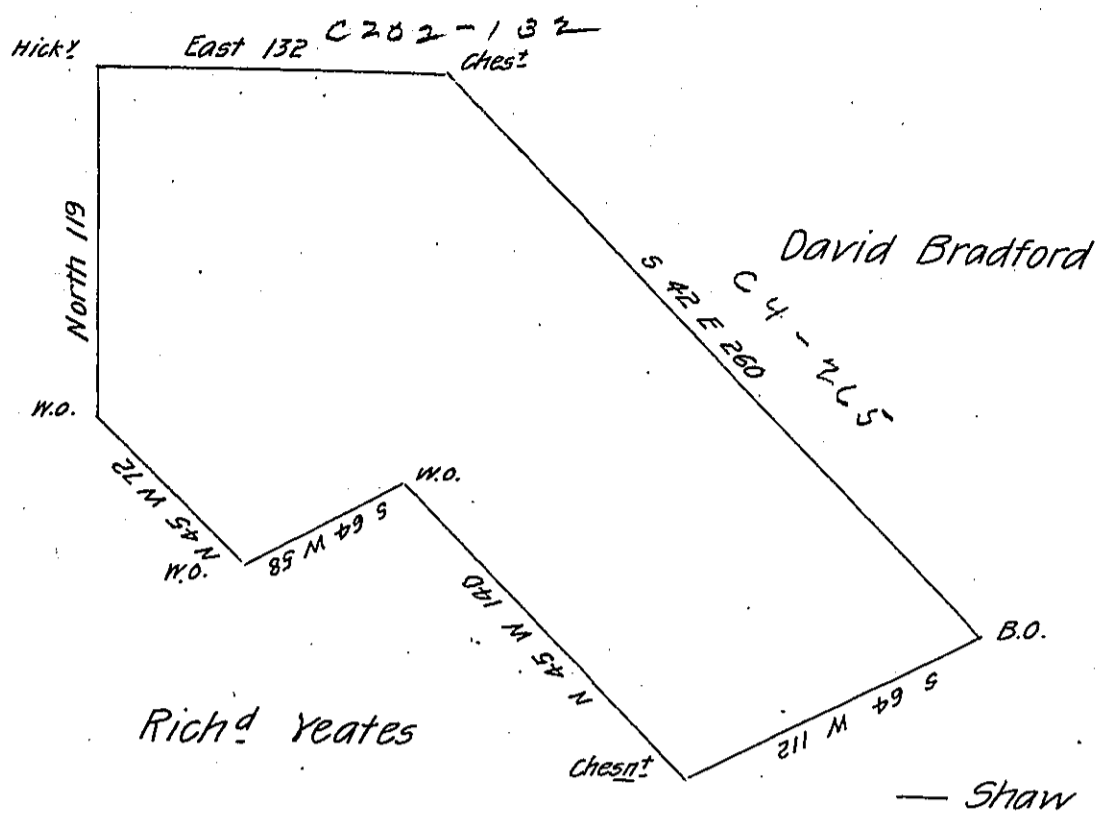


Thomas Stokeley



The above is the draught of a Survey on the Waters of Wheeling Creek in Washington County made June 20th 1794 in pursuance of a Warrant granted to John Quinn June 28th 1785. It is called Wentworth & contains 219 Acres & 33 perches with the usual allowance of 6 p. Cent

Jn^o Hoge D. S.

Daniel Brodhead Esq^r
Surv^r Gen^l

IN TESTIMONY that the above is a copy of the original remaining on file in the Department of Internal Affairs of Pennsylvania, made conformably to an Act of Assembly approved the 16th day of February, 1833, I have hereunto set my Hand and caused the Seal of said Department to be affixed at Harrisburg, this fourteenth day of May 1906

Goard D. Power
Secretary of Internal Affairs.